

# GRAND EFFECTS



**FIRE AND WATER ELEMENTS**



**COMMERCIAL AND RESIDENTIAL**





# GRAND EFFECTS

*Designed to Inspire*

Why not turn your ordinary jobs into the extraordinary! Grand Effects, known for its beautiful fire and water features at well known resorts and hotels has developed a residential product line. All of our Fire and Water features incorporate either full automation or manual operation using a CSA/AGA approved burner system. Our system is safe and easy to install. Builders and homeowners can choose from a variety of beautiful decorative designs and finishes that will enhance their designs.

*Not just for resorts anymore!*



“GRAND EFFECTS  
is my choice for  
Fire Features.”

- Criss Angel  
(MIND FREAK)

*Awarded “Magician  
of the Century”*



*As Seen on  
HGTV*

Whether you are an architect that is designing high end resorts or a homeowner who will settle for only the best, Grand Effects will provide a unique feature that will bring the attention you desire to your property.

We offer beautiful decorative pieces that will be the focal point of your job. Our decorative pieces, available in different shapes and sizes, are beautifully crafted with quality materials, including: hammered copper and concrete.

Our patented technology, superior to others, is proven and reliable. It will hold up and operates during extreme weather conditions. All of our products are CSA/AGA approved. Grand Effects sells ONLY to contractors or builders in the trade. If you are a homeowner, please have your builder contact us for pricing.



# FIRE BOWLS

COMPLETE AUTOMATED  
OR MANUAL SYSTEMS

Essex (Copper - Oil Rubbed Bronze)  
31"OD x 10"H x 10"B



Essex (Concrete)  
31"OD x 10"H x 10"B  
36"OD x 11.5"H x 10"B



- AUTOMATION INCLUDES:
- U.L. Control Panel
  - CSA Approved Burner Assembly  
With Flame Monitoring Technology
  - Can Be Operated Remotely From Any  
Home Or Pool Operating System.

- Mounting Hardware
- 60,000 - 80,000 BTU/HR
- Natural Gas Or Propane
- Easy To Install
- 1 Year Warranty

Legacy (Concrete)  
24"OD x 36"H x 13"B



Legacy (Concrete)  
30"OD x 24"H x 14"B



Legacy (Concrete)  
30"OD x 12"H x 15"B



Essex Fire Bowl



Corinthian Fire Bowl  
Down Unda Pools, Texas

Biltmore (Concrete)  
32"OD x 9"H  
4.5 Dia. Balls on 18" Dia. Center



Banded Rim With Pedestal  
(Concrete)  
30"OD x 15"H x 14"B



Fiore (Concrete)  
32"OD x 9"H x 10"B  
14"B x 6"H (Optional Pedestal)



Garden Bowl  
(Concrete)  
31"OD x 12"H x 16"B



Banded Rim (Concrete)  
30"OD x 9"H x 10"B



Corinthian (Copper - Oil Rubbed Bronze)  
29" x 29" SQ x 9"H (17" SQ Base)  
(Concrete) 30" x 30" SQ x 10"H



Windsor (Copper)  
30"OD x 9"H x 9"B



Tuscano (Copper - Oil Rubbed Bronze)  
31"OD x 11"H x 10"B





# FIRE AND WATER BOWLS

COMPLETE AUTOMATED  
OR MANUAL SYSTEMS

Essex (Concrete)  
31"OD x 10"H x 10"B  
36"OD x 11.5"H x 10"B



Biltmore (Concrete)  
32"OD x 9"H  
4.5 Dia. Balls On 18" Dia. Center



Essex  
(Copper - Oil Rubbed Bronze)  
31"OD x 10"H x 10"B



Corinthian  
(Copper - Oil Rubbed Bronze)  
29" x 29" SQ x 9"H (17" SQ Base)  
(Concrete) 30" x 30" SQ x 10"H



Tuscano  
(Copper - Oil Rubbed Bronze)  
31"OD x 11"H x 10"B



Essex Fire And Water Bowl



Tuscano Fire And Water Bowls  
Paragon Pools, Las Vegas

## AUTOMATION INCLUDES:

- U.L. Control Panel
- CSA Approved Burner Assembly  
With Flame Monitoring Technology
- Can Be Operated Remotely From Any  
Home Or Pool Operating System
- Mounting Hardware
- 60,000 - 80,000 BTU/HR
- 15 GPM Required Waterflow Per Bowl

- Natural Gas Or Propane
- Easy To Install
- 1 Year Warranty

Legacy (Concrete)  
30"OD x 12"H x 15"B



Legacy (Concrete)  
24"OD x 36"H x 13"B



Custom Design Pools, Texas



# WATER BOWLS

Includes Mounting Hardware | Easy To Install | 1 Year Warranty | 15 GPM Waterflow

Essex  
(Copper - Oil Rubbed Bronze)  
31"OD x 10"H x 10"B



Tuscano  
(Copper - Oil Rubbed Bronze)  
31"OD x 11"H x 10"B



Corinthian  
(Copper - Oil Rubbed Bronze)  
29" x 29" SQ x 9"H (17" SQ Base)  
(Concrete) 30" x 30" SQ x 10"H



Essex (Concrete)  
31"OD x 10"H x 10"B  
36"OD x 11.5"H x 10"B  
48"OD x 15"H x 14"B



Biltmore (Concrete)  
32"OD x 9"H  
4.5 Dia. Balls On 18" Dia. Center



Legacy (Concrete)  
30"OD x 12"H x 15"B



Essex Water Bowl



Essex Water Planter with LED Light Bar

Large Area For Plant Materials | Easy To Install | 1 Year Warranty | 15 GPM Waterflow

# WATER PLANTIER

Biltmore (Concrete)  
32"OD x 9"H  
4.5 Dia. Balls On 18" Dia. Center



Legacy (Concrete)  
30"OD x 12"H x 15"B



Essex (Concrete)  
31"OD x 10"H x 10"B  
36"OD x 11.5"H x 10"B  
48"OD x 15"H x 14"B



Corinthian  
(Copper - Oil Rubbed Bronze)  
29" x 29" SQ x 9"H (17" SQ Base)  
(Concrete) 30" x 30" SQ x 10"H



Tuscano  
(Copper - Oil Rubbed Bronze)  
31"OD x 11"H x 10"B



Essex  
(Copper - Oil Rubbed Bronze)  
31"OD x 10"H x 10"B





# 360 FIRE AND WATER BOWLS

COMPLETE AUTOMATED  
OR MANUAL SYSTEMS

- AUTOMATION INCLUDES:
- U.L. Control Panel
  - CSA Approved Burner Assembly With Flame Monitoring Technology
  - Can Be Operated Remotely From Any Home Or Pool Operating System
  - 30 - 50 GPM Required Waterflow

- Mounting Hardware
- 120,000 BTU/HR
- Natural Gas Or Propane
- Easy To Install
- 1 Year Warranty

Essex (Concrete)  
48"OD x 15"H x 14"B



Legacy (Concrete)  
42"OD x 18"H x 20"B



Biltmore (Concrete)  
42"OD x 14"H



42" Biltmore



42" Biltmore

"Designed to Inspire" - 360 Fire and Water Bowls by Grand Effects provides splendor and elegance to any design.

The 360 Fire and Water piece combines an elegant flow of water spilling from the bowl with an illuminating flame that provides a magnificent reflection off of the water.

## NEW! LINEAR FIRE TABLE

Linear Fire Table  
(Copper - Oil Rubbed Bronze)  
60.5" L x 26.5" W x 19.5" H  
with 8" Ledge





# FIRE PITS

COMPLETE AUTOMATED  
OR MANUAL SYSTEMS

- AUTOMATION INCLUDES:
- U.L. Control Panel
  - CSA Approved Burner Assembly  
With Flame Monitoring Technology
  - Can Be Operated Remotely From Any  
Home Or Pool Operating System

- Mounting Hardware
- 120,000 BTU/HR
- Natural Gas Or Propane
- Easy To Install
- 1 Year Warranty

Essex (Copper - Oil Rubbed Bronze)  
48"OD x 15"H x 14"B  
with 7" Ledge



Cielo (Copper - Oil Rubbed Bronze)  
45"OD x 15"H  
with 7" Ledge



Grand Corinthian (Copper - Oil Rubbed Bronze)  
50" x 50" SQ x 17"H  
with 8.5" Ledge



Legacy (Concrete)  
42"OD x 18"H x 20"B



Grand Corinthian (Copper - Oil Rubbed Bronze)  
40" x 40" SQ x 17"H  
with 6.5" Ledge

Grand Corinthian (Concrete)  
42" x 42" SQ x 18"H  
with 7" Ledge



Essex (Concrete)  
48"OD x 15"H x 14"B  
with 7" Ledge



Legacy (Concrete)  
42"OD x 18"H x 20"B  
with 7" Ledge



Escala (Concrete)  
42" x 42" SQ x 18"H  
with 7" Ledge



Biltmore (Concrete)  
42"OD x 14"H  
Or 60"OD x 17"H



Caldera (Copper - Oil Rubbed Bronze)  
43"OD x 18"H Table Top with Inner Bowl





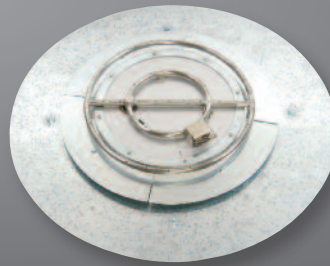
# FIRE PIT/FIRE BOWL INSERTS

COMPLETE AUTOMATED  
OR MANUAL SYSTEMS

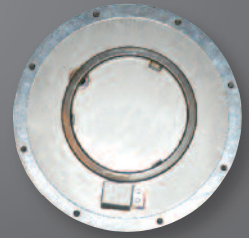
- Can Be Operated Remotely From Any Home Or Pool Operating System
- Natural Gas Or Propane
- Easy To Install
- 1 Year Warranty



Control Panel



Fire Pit Insert With Support Plate



Fire Bowl Insert

AUTOMATION INCLUDES:

- U.L. Control Panel
- CSA Approved Burner Assembly With Flame Monitoring Technology
- Fire Bowl Inserts 60,000 - 80,000 BTU/HR
- Fire Pit Inserts 80,000 - 120,000 BTU/HR
- Includes Installation Hardware



Grand Effects Fire Pit Inserts - Build your own fire pit and we automate it.

All of our Fire Pit Inserts incorporates full Automation or Manual operation using a CSA/AGA approved burner system. Our automated technology is proven. Our Burner Assembly is a packaged unit (not a box of parts). Each one is factory tested, safe and easy to install. You can choose from different sizes of Support Plates to fit your installation (Support Plates are available in 30" and 35") Our Support Plate supports the Burner Assembly and provides you with a means to lay media on top. Because you are not filling up the whole fire pit with rock, it will save you money on fill material. Our system can be operated from any home system or pool controller.



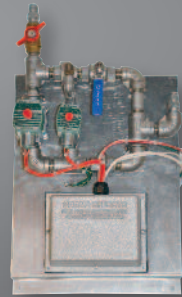
# LINEAR INSERTS

COMPLETE AUTOMATED  
OR MANUAL SYSTEMS

- Can Be Operated Remotely From Any Home Or Pool Operating System
- Burner Assemblies Available From 3' to 10' Lengths
- Natural Gas Or Propane
- Easy To Install
- 1 Year Warranty



Burner Assembly



Sub-Panel Assembly



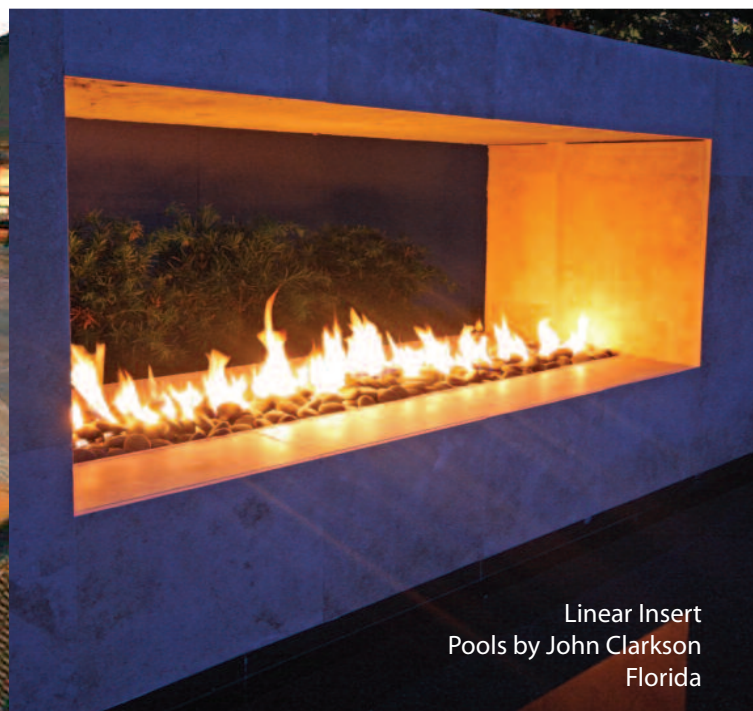
Control Panel

AUTOMATION INCLUDES:

- U.L. Control Panel
- CSA Approved Burner Assembly With Flame Monitoring Technology
- 120,000 - 400,000 BTU/HR
- Includes Installation Hardware



Linear Insert  
Cimaron Circle Construction  
Arizona



Linear Insert  
Pools by John Clarkson  
Florida



Custom Curved Insert  
Paragon Pools, Texas

All of our Linear Inserts incorporate either full automation or manual operation using a CSA/AGA approved burner system.

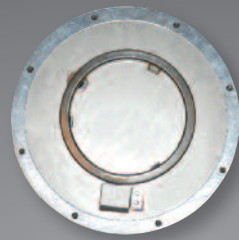
Available in 3' to 10' lengths. Custom lengths and shapes are available on request. Our Burner Assembly is a packaged unit (not a box of parts). Automation includes: UL Control Panel, SubPanel and Support Plate with Burner. Our Burner Assembly is fabricated from a high grade of 304 stainless steel. Each unit is factory tested, safe and easy to install. Our support plate holds the Burner Assembly and provides you with a means to lay media on top. Our automated system can be operated from any home system or pool controller.



# ROCK INSERTS

COMPLETE AUTOMATED  
OR MANUAL SYSTEMS

- Can Be Operated Remotely From Any Home Or Pool Operating System
- Natural Gas Or Propane
- Easy To Install
- 1 Year Warranty



Burner Assembly

Control Panel



AUTOMATION  
INCLUDES:

- U.L. Control Panel
- CSA Approved Burner Assembly With Flame Monitoring Technology
- 60,000 - 80,000 BTU/HR
- Includes Installation Hardware



Grand Effects, the creator of Rock Inserts, has made it easy to incorporate fire features into real or artificial rock. We guarantee that your rock work will stand out and be noticed. We provide you with cavity design and specifics. Our Packaged Burners make installation easy. Install as many features as you want. Our system can be operated from any home system or pool controller.



# STONE CANDELERE'

*Simple but Elegant*

FIRE OR WATER VERSIONS

Illuminate your designs with Stone Candelere' from Grand Effects. Beautifully designed stone pieces. Watch them come alive at night, available in Fire or Water, with optional "Show Features".

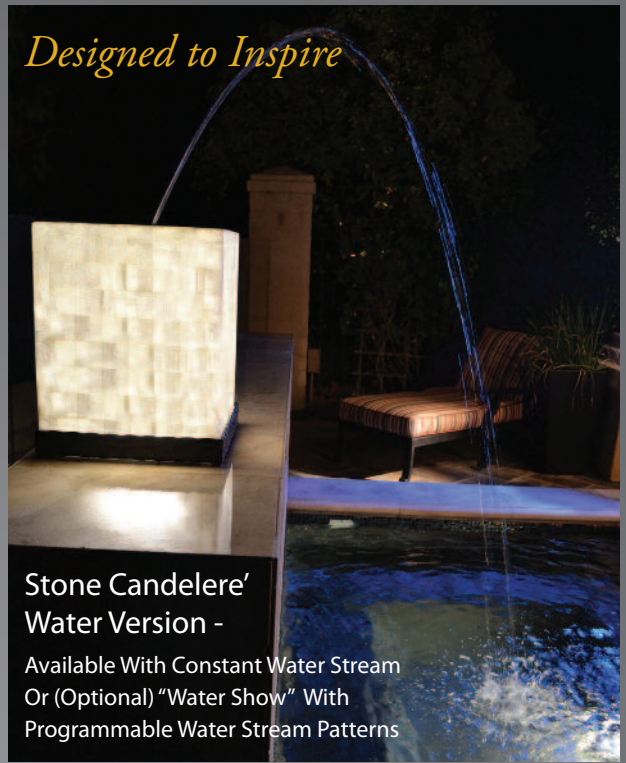


14.5" Sq. x 17" H



17" Dia. x 16" H

The Stone Candelere', available in round or square, is hand crafted from a white quartz stone with translucent properties and pieced together using a Marquetry Inlay technique. Each Candelere' includes a decorative base, powder coated Black or Brown



## Stone Candelere' Water Version -

Available With Constant Water Stream Or (Optional) "Water Show" With Programmable Water Stream Patterns



"Light Show" (Optional)  
Programable Color Lighting Available For Fire Or Water Versions



Water Version - Interior View

- Standard Water Version Includes:
- White LED Lights (U.L. Approved) Includes Transformer
  - Lights Can Be Operated Remotely From Any Home Or Pool Operating System
  - Required Water Flow: 5 gpm Per Unit.

- Water Show (Optional)
- Programmable Water Stream Pattern Controlled By ON/OFF Solenoid located at each unit and PLC Control Panel. Program Your Own Custom Sequence.

- Light Show (Optional)
- Colored LED Lights (U.L. Approved) Includes Transformer
  - Program Seven Static Colors including Three Show Mode Options That Sequence Seven Colors

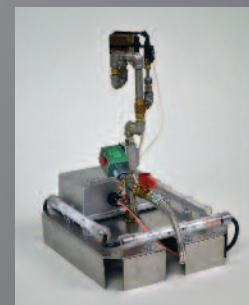


## Stone Candelere' Fire Version -

"Fire Show" (Optional)  
Program Flame And Watch It Dance From High To Low Positions

- Standard Fire Version With Automation Includes:
- U.L. Approved Control Panel
  - CSA Approved Burner System With Flame Monitoring Technology
  - 5,000-15,000 Btu/hr (15,000 Btu/hr required For Fire Show)
  - White LED Lights (U.L. Approved) Includes Transformer
  - Lights And Burners Can Be Operated Remotely From Any Home Or Pool Operating System
  - Burner System (Automated Or Manual System)

"Fire Show" (Optional)



Fire Version - Interior View

- Fire Show (Optional)
- Automated Burner System Can Be Controlled To A HI/LOW Flame Heights Using A Programmable Control Panel.

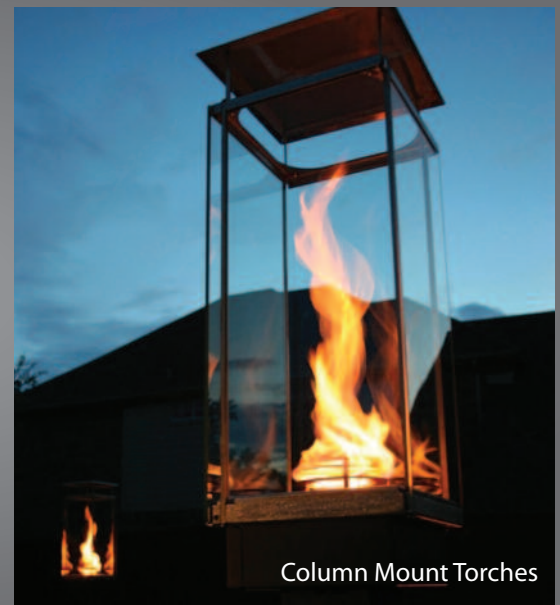
- Light Show (Optional)
- Colored LED Lights (U.L. Approved) Includes Transformer
  - Program Seven Static Colors Including Three Show Mode Options That Sequence Seven Colors



# THE HELIX

COMPLETE AUTOMATED  
OR MANUAL SYSTEMS

The Grand Effects Torches offer three types of mounting; vertical, column and wall. Offering a beautiful combination of function and design, the torch head incorporates venturi technology to create a dramatic spiraling flame. The decorative flame is housed in high temperature glass panels that provide a unique look and accents the swirling flame. The torch head is well constructed using all stainless steel materials.



Column Mount Torches



69" Vertical Torches



Wall Torches



- Can Be Operated Remotely From Any Home Or Pool Operating System
- Natural Gas Or Propane
- Easy To Install
- 1 Year Warranty

AUTOMATION  
INCLUDES:

- U.L. Control Panel
- CSA Approved Burner Assembly With Flame Monitoring Technology
- 20,000 BTU/HR
- Includes Installation Hardware



# TIKI TORCHES

## MANUAL SYSTEMS

Accent your hardscapes with Tikis from Grand Effects. They offer a unique look with different designs to choose from, including cut stone and aluminum with a powdercoat finish.

- Manual Operation
- Easy to Install
- Easy to use
- Safe to operate
- 6,500 BTU/HR



GETIKI-11 4.5" Dia. x 8" H



GETIKI-44 6.5" Dia. x 6" H



GETIKI-55 4.5" Dia. x 8.5" H



GETIKI-33 4" Dia. x 8" H



GETIKI-22 4" Dia. x 7.5" H



GETIKI-50 4.5" Dia. x 8" H



Tiki Torch



Water Scuppers

Water Scupper CS7  
11.38"L x 7"W x 6.75"H



Water Scupper CSV9  
11"L x 8.38"W x 4.97"H



Water Scupper CSREC10  
12"L x 10.13"W x 6.25"H



Water Scupper DWCS6  
6" Double Wall Water Scupper



Water Scupper DWCS8  
8" Double Wall Water Scupper



Water Scupper DWCS10  
10" Double Wall Water Scupper



Water Scupper DWCS12  
12" Double Wall Water Scupper



## WATER SCUPPERS

Grand Effects Water Scuppers are finished with a rich oil rubbed bronze finish. They are easy to install and provide an elegant glass-like sheet of water.



# DECORATIVE MEDIA

Include our Decorative Stone or captivating jewel-like appearance Fire Glass with your Grand Effects Fire Features. Our glass is tempered for long term heat consumption. Choose from a variety of beautiful colors.

\*NOTE: Grand Effects does not sell glass for propane applications due to safety concerns.



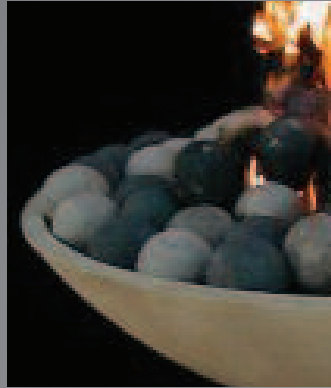
Decorative Ceramic Stone is located on a thin bed of 1/4" black lava (supplied by Grand Effects)

Size: 2"-3"

Color: Black



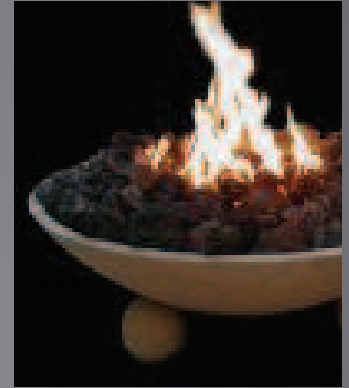
Tumbled Lava Rock  
1" - 1 1/2" piece size  
Grey-Black



Lava Spheres  
Available in 3" and 4" sizes Colors  
of Black, Brown, Tan and Grey



Lava Rock  
2" - 5" piece size  
Black

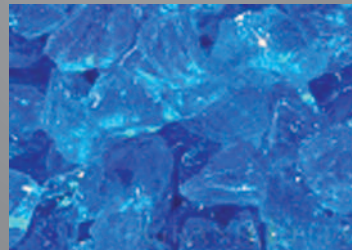


Lava Rock  
with fire

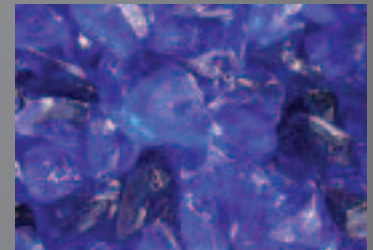
## FIRE GLASS AVAILABLE IN 2 SIZES



3/8" - 1/2" Pieces  
(A Grand Effects precut stainless mesh is required to support the glass)



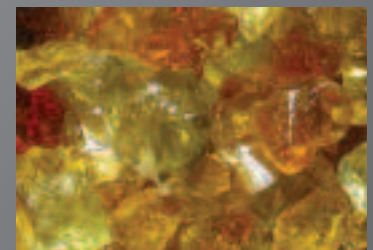
Turquoise Blue Fire Glass



Ocean Blue Fire Glass



3/8" Black Reflective Fire Glass



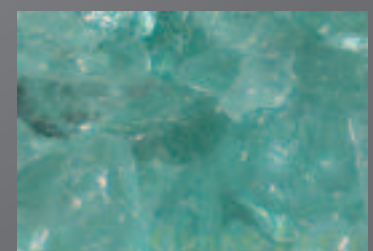
Chestnut Fire Glass



1/2" - 1" Pieces  
(A Grand Effects precut stainless mesh is required to the support glass)



Black Fire Glass



Aqua Blue Fire Glass



# ACCESSORIES

## LEDGE LOUNGER CHAIR FOR POOLS WITH BAJA SHELF

- Fine contours to support the body
- Lightweight design
- Ultra-strong Polyethylene design
- Color Stabilized for UV resistance
- Chemical & Weather-defying resistance



## COPPER DRINK TABLE

(Oil Rubbed Bronze Finish)

Size: 20" Diameter x 20" Tall

Table also Available in Concrete



## LED LIGHT BAR FOR BOWLS

LED Light Bar works with

- Grand Effects Fire & Water Bowls
- Grand Effects Water Plantier



## BOWL COVERS



Custom made for Grand Effects. Our covers are custom designed to fit our Fire Bowls and Fire Pits. Our covers are made with patented WeatherMax material, one of the highest quality fabrics available.

Color: Tan

1 Year Warranty

PLEASE NOTE: Covers are not available for every model.



# CONCRETE LANDSCAPE CONTAINERS

AVAILABLE IN MATCHING  
STYLES AND FINISHES

The perfect compliment to your fire and water elements, these durable, high quality containers are available in a variety of matching styles and finishes. Made of glass fiber reinforced concrete, our site furnishings are the preferred choice of Landscape Architects, Specifiers and Contractors. Ideal for commercial or residential use.



Legacy Tall Planter

dia.	height	base
22"	33"	13"
24"	36"	13.5"
28"	42"	16"
32"	48"	17.5"
40"	60"	19.5"



Legacy Planter

dia.	height	base
24"	20"	11"
30"	24"	14"
36"	29"	17"
39"	29"	19.5"
42"	34"	19.5"
48"	40"	22.5"
60"	48"	28"



Legacy Urn

dia.	height	base
24"	24"	13"
30"	30"	16.5"
36"	36"	25"
48"	48"	27.5"



Geo Tall Square

rim	height	base
20"	24"	15"
24"	29"	18"
30"	36"	23"



Geo Square

rim	height	base
22"	19"	17"
28"	24"	22"
36"	30"	28"
48"	40"	38"



Geo Rectangle

rim	height	base
24" x 16"	24"	20" x 13"
36" x 16"	24"	32" x 13"
48" x 16"	24"	44" x 13"
60" x 16"	24"	56" x 13"
72" x 16"	24"	68" x 13"
72" x 36"	24"	72" x 30"



Geo Planter

dia.	height	base
24"	20"	12"
30"	24"	15"
36"	30"	18"
42"	36"	21"



Geo Vase

dia.	height	base
20"	30"	11"
24"	36"	13"
28"	42"	15"
32"	48"	17.5"



Geo Square Vase

rim	height	base
12"	24"	9"
15.5"	29"	11.5"
19"	36"	14"
22"	42"	16"
25"	48"	18.5"





### Fresco Square

rim	height	base
24"	12"	23"
24"	18"	23"
24"	24"	23"
36"	18"	35"
36"	24"	35"
36"	30"	35"
36"	36"	35"
48"	18"	46"
48"	24"	46"
48"	30"	46"
48"	36"	46"
60"	18"	58"
60"	24"	58"



### Fresco Rectangle

rim	height	base	rim	height	base
24" x 16"	12"	22.5" x 14.5"	48" x 20"	24"	46.5" x 24"
24" x 16"	18"	22.5" x 14.5"	60" x 16"	18"	58" x 14.5"
36" x 16"	12"	34.5" x 14.5"	60" x 20"	24"	58" x 18.5"
36" x 16"	24"	34.5" x 14.5"	60" x 20"	30"	58" x 18.5"
36" x 20"	12"	34.5" x 18.5"	72" x 20"	24"	70" x 18.5"
48" x 16"	18"	46.5" x 14.5"	72" x 20"	36"	70" x 18.5"
48" x 16"	24"	46.5" x 14.5"			



### Chinese Urn

dia	height	base
27"	36"	13"
36"	48"	15"
39"	60"	18"



### Ribbed Urn

dia.	height
26"	36"



### Chinese Smooth Planter

dia.	height	base
24"	42"	15"



### Greek Bee Hive Planter

dia.	height	base
22"	24"	11"
25"	29"	14"
40"	48"	21"
60"	72"	29"



### Venetian Fountain

OD	height	base
48"	21"	35"
60"	21"	35"

Shown with optional  
Acorn Finial  
12" x 19" h

**GRAND EFFECTS**  
*Designed to Inspire*

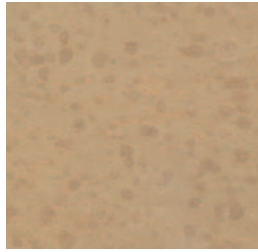


# STANDARD CONCRETE COLOR FINISHES

Shown are standard options for color finishes on our concrete based fire and water features. We use stains and washes to achieve our beautiful, long lasting finishes. Finishes and colors may vary, color samples available upon request.



NEW KHAKI



GREEK



LIMESTONE



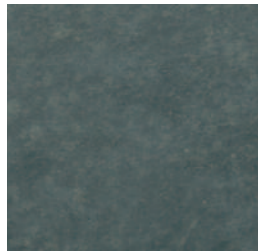
DARK WALNUT



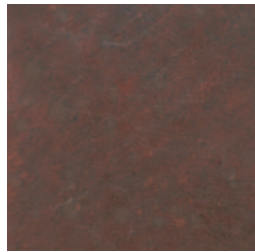
EBONY



SEQUOIA



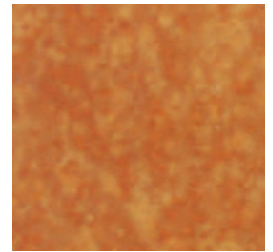
ENGLISH LEAD



BURNT  
TERRA COTTA



URBAN SLATE



DEEP AMBER

Grand Effects concrete bowls incorporate a concrete- fiberglass mix, resulting in a lighter but structurally stronger bowl. Our decorative pieces are beautifully finished with a hand applied process that includes multiple stains and washes and includes a final wax seal. The wax seal provides a deep lustrous finish and protection against fading and discoloration from the outdoor environment. The wax seal requires a healthy dose of direct sunlight to finish the curing process. We could use paints and quick drying stains to speed up cure times, but this would sacrifice the quality and beauty of our finished products.



## COPPER MANUFACTURING



Our Copper Bowls are beautifully hand made with an oil rubbed bronze finish. The naturally rich look is achieved by heat-setting or tempering the copper to a patina finish. The patina is a living finish that will endlessly regenerate throughout the life of the product with regular use and maintenance.



# GRAND EFFECTS

## CUSTOMER TESTIMONIALS

Once we started using Grand Effects there was no need to look any further. Grand Effects offers so much more than great products, they offer great customer service.

*Chris Anderson - Custom Design Pools  
Houston, Texas*

Grand Effects is always a pleasure to work with. They are very professional, always adhere to timelines, and are very responsive with their warranty work (although we rarely have any). They make a great product that holds together and looks great!!

*Taylor Christopher - J. Caldwell Custom Pools  
Fort Worth, TX*

Landmark Pools, California

One of the biggest trends we are seeing in the industry right now are fire features and the Grand Effects product line allows us to be extremely creative in taking backyards to a new dimension. We as a company are very impressed with the innovative product line which has brought an entire new dimension to backyard creations. We are pleased with the customer service and support we get not only during the sales and installation but just as much after the sale.

*Shelly Claffey-Broder - Claffey Pools, Southlake, Texas*

As a builder we are only as good as the product we use and there is never a doubt of quality when using Grand Effects.

*Barry Justus - Poolscape Inc. Toronto, Canada*

What can you do with a project that is more dramatic and mood setting than fire and water? Grand Effects is at the top of the list for fire innovation, quality and dependability.

*Kevin Kraft, President - Ozzie Kraft, Las Vegas, Nevada*

Grand Effects products are Designed To Inspire!

*Vance Gillette - Vice President of Zodiac Pools Systems Corp.*

Being one of the top 10 builders in the United States, we get a lot of promises made from manufacturers. If anyone is looking for high quality products and a company that stands behind their products, you will not go wrong with Grand Effects.

*Scott Waldo - Platinum Pools, Houston, Texas*



# COMMERCIAL INSTALLATIONS



La Koya - Naples, Florida



The Artmore Hotel - Atlanta, Georgia



P F Changs Restaurant - Wichita, Kansas



Capella Resort - Cabo San Lucas, Mexico



Atlantis Resort - Dubai



The Harbor Club - San Diego, California



Emeralda Resort - Palm Springs, California





## COMMERCIAL INSTALLATIONS



Pechanga Resort - San Diego, California

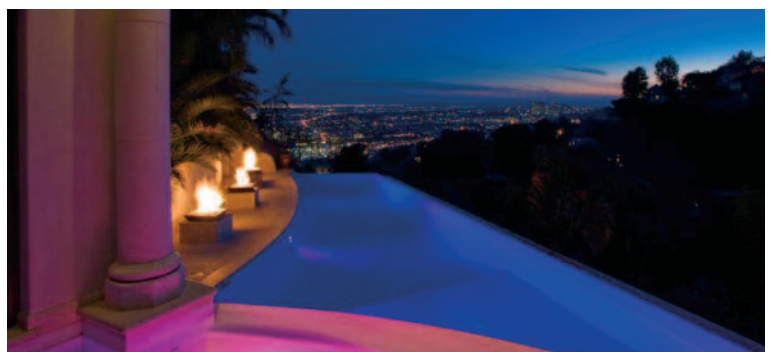


Marriott - Azerbaijan



Peppermill - Reno, Nevada

## RESIDENTIAL INSTALLATIONS













# GRAND EFFECTS

*Designed to Inspire*

Grand Effects, a manufacturer of high-end commercial and residential Fire and Water Features is a leader in innovation, creativity and product quality. Grand Effects products are used extensively on well known projects throughout the world including: Atlantis Resorts-Dubai, Sandals Resorts-Caribbean and Jamaica, Ritz Carlton-Caribbean, Hiltons, Marriotts-(United States). Architects, Builders, Designers and Landscapers alike, rely on Grand Effects for their outdoor Fire and Water Features.



## FIRE AND WATER ELEMENTS



## COMMERCIAL AND RESIDENTIAL

# GRAND EFFECTS

Phone (949) 697-5270 Fax (949) 625-8027

[info@grandeffectsinc.com](mailto:info@grandeffectsinc.com)

18 Technology Drive, #110, Irvine, CA 92618

[www.grandeffectsinc.com](http://www.grandeffectsinc.com)

Form GE-120  
[SJdesignGroup.com](http://SJdesignGroup.com)